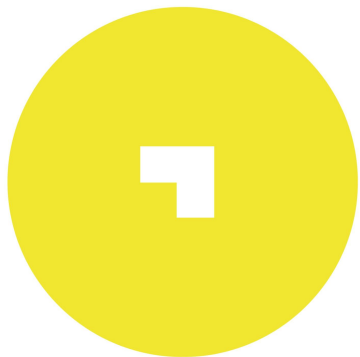


arte + care



PORTAS
VILASECA
G A L E R I A

Juntos

CONTRA COVID-19



For the 2nd cycle of the program, this month named **ARTE+CARE #2**, we chose to support **“TOGETHER AGAINST COVID-19”**, an initiative coordinated by NGO “Move Rio”, in partnership with other organizations, to help families from different communities throughout the city of Rio de Janeiro who do not have resources and need to stay home during this period of social isolation. The action is run by donations and distribution of basic-needs grocery packages, personal hygiene items and cleaning products. For more information, visit the website: www.juntoscontracovid.com.br

ARTE+CARE is a project developed by PORTAS VILASECA GALERIA to encourage artistic production and its collaborative commercialization in a period of radical change in the socio-economic scenario across the globe.

The impact on the chain of the arts and culture sectors is enormous, and capturing the changes already underway is a complex and challenging mission. It is crucial now that we turn our attention to these sectors, considering their value to society as a whole - as measured by their economic and social relevance and impact.

In this context, PORTAS VILASECA GALERIA has reflected not only on the best strategies to improve the dynamics of its actions, whether through new ways of relationship with the public and dissemination of the works of its represented artists, but also through the activation of a collaborative movement to stimulate and strengthen other agents and organizations.

Therefore, ARTE+CARE emerges as a program to support our artists, and at the same time, to help people and organizations who aid, care, and protect those who are most affected during these difficult times: artists and other cultural workers facing economic strain, children and vulnerable communities.

Every Saturday, we will make available on our social media channels and on our Artsy profile series of unpublished works at affordable prices (ranging from USD 250 to USD 900 each), developed exclusively by our artists for the ARTE+CARE program, and each month, a percentage of the sales of these unique series will be donated to a different organization / initiative. Our artists will produce works with materials available in their studios during these quarantine times. In this PDF, we share a new series of works by artist CAROLINA MARTINEZ. Next week, we start cycle #3, bringing new works by artist FELIPE SEIXAS.

For the second cycle of the program, this month named ARTE+CARE #2, we chose to support "TOGETHER AGAINST COVID-19", an initiative coordinated by the NGO *MOVE RIO*, in partnership with other organizations, to help families from different communities throughout the city of Rio de Janeiro who do not have resources and need to stay home during this period of social isolation. The action is run by donations and distribution of basic-needs grocery packages, personal hygiene items and cleaning products.

The amount received from each sale will be allocated as follows: 50% for the artist, 35% for the gallery, and 15% for the initiative of the month.

Two months ago, the artist **Carolina Martinez** selected some materials available in her studio in Rio de Janeiro and isolated herself in the woods, on the outskirts of the city. Throughout this period of social isolation, the series ***Refuges*** has emerged, maintaining some of the artist's choices regarding the supports, in consonance with her trajectory. This time, Martinez used cedar, from the remains of a construction site. These pieces of solid wood would initially be used in the composition of some skirting boards in a house. However, before being discarded and taken as firewood, they were adopted as support for her new works. Then they were cut, sanded and finally painted. This new series reflects one aspect of the artist's isolation, in which we can observe the transformation of her feelings of limitation into a material element. In addition, there is an attempt to work with what is possible, in harmony with nature, a "refuge within a refuge".



Carolina Martinez

Refuge #1, 2020

From the series "*Refuges*"

Acrylic on wood

Edition: unique

9,5 x 9,5 x 2 cm

USD 230,00

sold



Carolina Martinez

Refuge #2, 2020

From the series "*Refuges*"

Acrylic on wood

Edition: unique

9,5 x 9,5 x 2 cm

USD 230,00

sold



Carolina Martinez

Refuge #3, 2020

From the series "*Refuges*"

Acrylic on wood

Edition: unique

9,5 x 9,5 x 2 cm

USD 230,00

sold



Carolina Martinez

Refuge #4, 2020

From the series "*Refuges*"

Acrylic on wood

Edition: unique

9,5 x 9,5 x 2 cm

USD 230,00

sold



Carolina Martinez

Refuge #5, 2020

From the series "*Refuges*"

Acrylic on wood

Edition: unique

9,5 x 9,5 x 2 cm

USD 230,00

sold



Carolina Martinez

Refuge #6, 2020

From the series "*Refuges*"

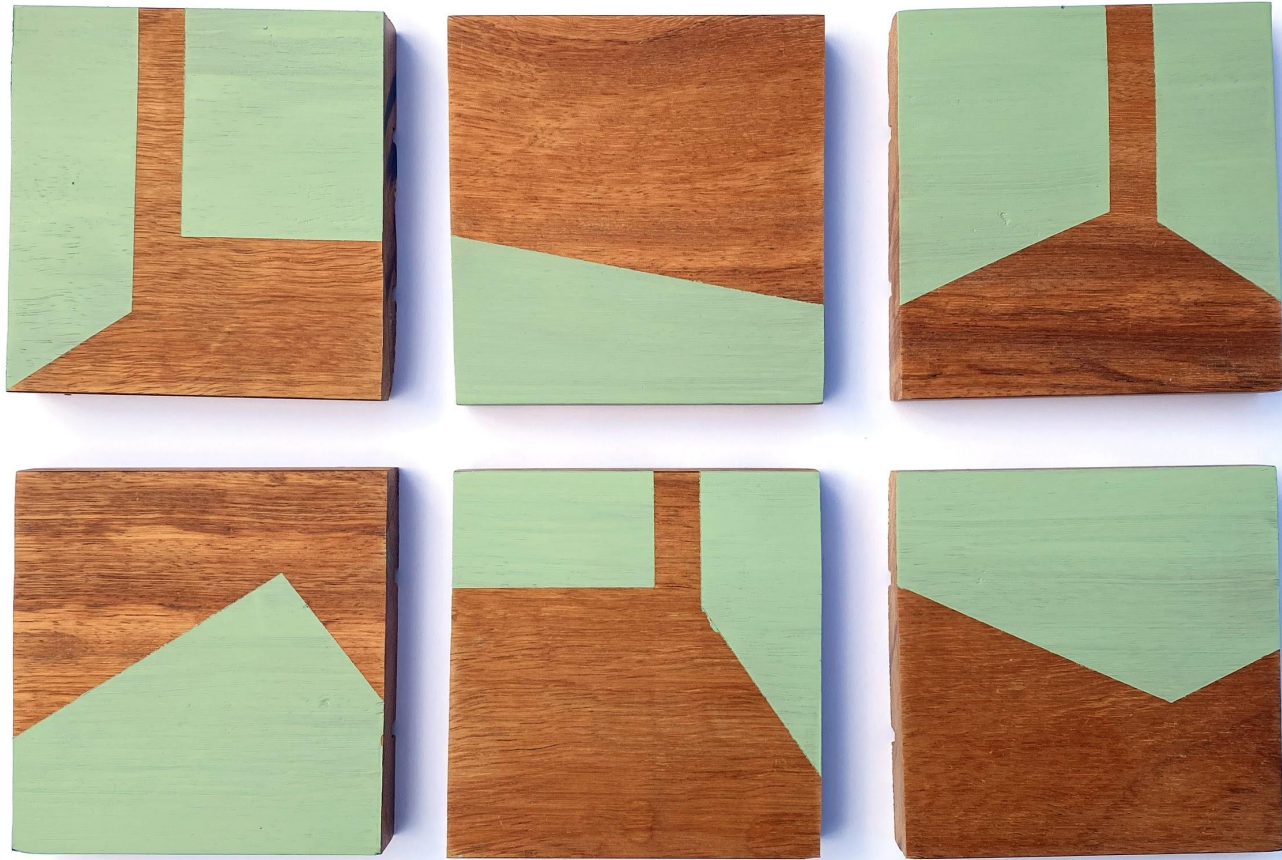
Acrylic on wood

Edition: unique

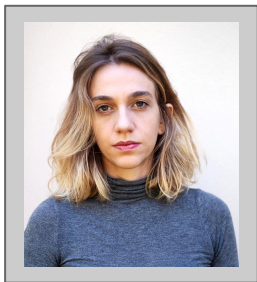
9,5 x 9,5 x 2 cm

USD 230,00

sold



Photos of the works: Demian Jacob



CAROLINA MARTINEZ was born in 1985 in Rio de Janeiro, where she lives and works. She holds a Bachelor's Degree in Architecture and Urbanism and a PhD in History of Art and Architecture in Brazil from PUC - Rio de Janeiro. She also attended several courses at Parque Lage's School of Visual Arts, also in Rio de Janeiro. Throughout her creative process, Martinez investigates architectural spaces and urban surfaces. In her artistic production, she focuses on the viewer's gaze towards empty and seemingly uninhabited spaces. In this way, the artist reveals invisible perspectives, such as the passage of time and light, through paintings, collages, assemblages and site-specific installations.

Martinez has participated in several group exhibitions in recent years, such as: *AAA - Anthology of Art and Architecture*, curated by Sol Camacho, Galpão Fortes D'Aloia and Gabriel, Sao Paulo, Brazil (2020); *MOLT BÉ !*, curated by Raphael Fonseca, Portas Vilaseca Galeria, Rio de Janeiro (2018) and *Aproximações*, curated by Zalinda Cartaxo, Galeria Celma Albuquerque, Belo Horizonte, MG, Brazil (2017). Among her most recent solo exhibitions, we highlight: *Odeón*, curated by Jaime Portas Vilaseca, Espacio Odeón, Bogotá, Colombia (2017); *SP-Arte Solo Project*, curated by Luiza Teixeira de Freitas, Ciccillo Matarazzo Pavilion, Sao Paulo, Brazil (2016) and *Aquilo que não conseguia ver*, curated by Ivair Reinaldim, Portas Vilaseca Galeria, Rio de Janeiro, Brazil (2015). In 2015, she participated in an art residency at Residency Unlimited, in New York (USA). In 2010, she received the *Garimpo Award*, promoted by DasArtes Magazine Brasil, and was also awarded at the 35th Contemporary Art Salon in Ribeirão Preto - SARP, Ribeirão Preto, SP, Brazil.



**PORTAS
VILASECA**
GALERIA

Jaime Portas Vilaseca

Director

+ 55 21 99926 3899

jaime@portasvilaseca.com.br

Manuela Parrino

Marketing and Liaisons

+55 21 98819 8906

manuela@portasvilaseca.com.br

Frederico Pellachin

Institutional Communications and Production

+55 21 98336 1984

fredericopellachin@portasvilaseca.com.br

+55 21 2264 5965

www.portasvilaseca.com.br

galeria@portasvilaseca.com.br

Rua Dona Mariana, 137 casa 2

Botafogo 2220-020

Rio de Janeiro RJ Brazil

www.artsy.net/portas-vilaseca-galeria

www.facebook.com/portasvilaseca

Instagram: @portasvilaseca

Twitter: @portasvilaseca

