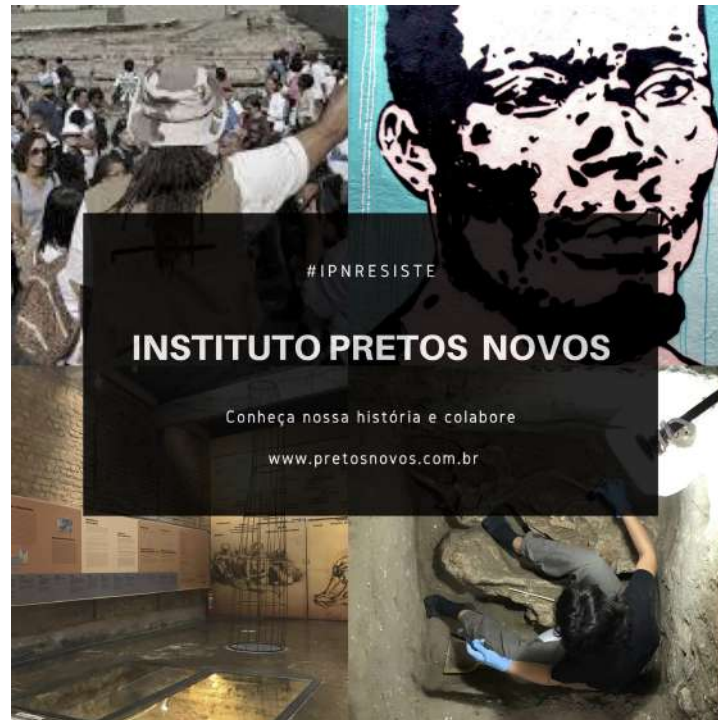


arte+care

In the 5th cycle of the program - ARTE+CARE #5 - we will support the IPN - Instituto dos Pretos Novos (New Blacks Institute) campaign: **#IPNRESISTE**.

Located at Rua Pedro Ernesto, in the Gamboa neighborhood (Rio de Janeiro's downtown area), the IPN has the mission of stimulating and promoting the construction of memories related to African and Afro-Brazilian cultures, as well as fostering reflection on slavery and racial equality in Brazil. The institute is responsible for the management of the *New Blacks Cemetery Archaeological Site* and the *New Blacks Memorial*. The space includes a specialized library and also a contemporary art gallery. Several courses and workshops are offered for teachers, residents of the area and the general public.

#IPNRESISTE is a campaign aiming to seize funds for the preservation of the IPN, which currently has no sponsors, nor government or institutional supporters. In the meantime, the space has been keeping its doors open thanks to the efforts of a team of volunteer professionals and donations from friends and visitors.





Merced Guimarães, IPN's president and founder in front of the institution, located at Rua Pedro Ernesto, Gamboa, Rio de Janeiro.



+55 21 2516 7089
+55 21 97015 3267 (Whatsapp)
+55 21 96465 9983 (Whatsapp)
www.pretosnovos.com.br
pretosnovos@pretosnovos.com.br

Rua Pedro Ernesto, 32
Gamboa - Rio de Janeiro, RJ, Brazil



Permanent exhibition at the Pretos Novos Memorial Museum, where the Pretos Novos Cemetery Archaeological Site, the central element of the debate about the memory of the slavery in Brazil.

ARTE+CARE is a project developed by PORTAS VILASECA GALERIA to encourage artistic production and its collaborative commercialization in a period of radical change in the socio-economic scenario across the globe.

The impact on the chain of the arts and culture sectors is enormous, and capturing the changes already underway is a complex and challenging mission. It is crucial now that we turn our attention to these sectors, considering their value to society as a whole - as measured by their economic and social relevance and impact.

In this context, PORTAS VILASECA GALERIA has reflected not only on the best strategies to improve the dynamics of its actions, whether through new ways of relationship with the public and dissemination of the works of its represented artists, but also through the activation of a collaborative movement to stimulate and strengthen other agents and organizations.

Therefore, ARTE+CARE emerges as a program to support our artists, and at the same time, to help people and organizations that aid, care, and protect those who are most affected during these difficult times: artists and other cultural workers facing economic strain, children and vulnerable communities.

Every Saturday, we will make available on our social media channels and on our Artsy profile series of unpublished works at affordable prices (ranging from USD 250 to USD 900 each), developed exclusively by our artists for the ARTE+CARE program, and each month, a percentage of the sales of these unique series will be donated to a different organization / initiative. Our artists are developing works with materials available in their studios during these times of social isolation. In this PDF, we share "*Lambe Lambe*", a new series of paintings by artist RAFAEL BARON.

In the 5th cycle of the program - ARTE + CARE # 5 - we are supporting the campaign #IPNRESISTE, which aims to seize funds for the preservation of the Instituto dos Pretos Novos (Institute of New Blacks) - IPN - currently with no sponsors, nor government or institutional supporters. Located in the Gamboa neighborhood, in the downtown area of Rio de Janeiro, IPN has the mission of stimulating and promoting the construction of memories in relation to African and Afro-Brazilian cultures, as well as fostering reflection on slavery and racial equality in Brazil.

The amount received from each sale will be allocated as follows: 50% for the artist, 35% for the gallery, and 15% for the initiative of the month.







Lambe-Lambe, 2020

Rafael Baron

In the series ***Lambe-Lambe***, Rafael Baron presents 20 small-format paintings, which were developed from his imagery universe based on the study of the human figure.

The artist sought inspiration from the legendary “lambe-lambe” photographers (or street photographers), who emerged in the first decades of the 20th century working in public squares and parks. These professionals work taking photographs of special moments in family and also simple portraits for IDs.

The popular street photographers are part of the artist's childhood memories and from this first contact he became interested in the aesthetics of the portrait.



arte+care



Rafael Baron

Andrea, 2020

Acrylic on canvas

30 x 20 cm / 11.8 x 7.8 in

Edition: single

USD 500



arte+care



Rafael Baron

Andressa, 2020

Acrylic on canvas

30 x 20 cm / 11.8 x 7.8 in

Edition: single

USD 500

sold



arte+care



Rafael Baron

Brendo, 2020

Acrylic on canvas

30 x 20 cm / 11.8 x 7.8 in

Edition: single

USD 500

sold



arte+care



Rafael Baron

Carla, 2020

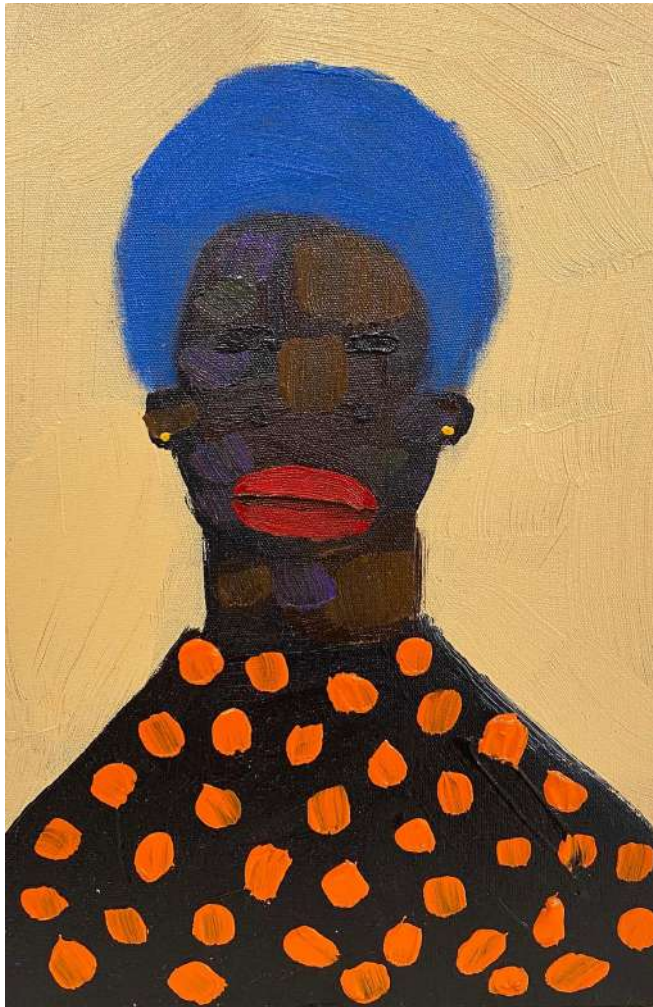
Acrylic on canvas

30 x 20 cm / 11.8 x 7.8 in

Edition: single

USD 500

sold



arte+care



Rafael Baron

Carlão, 2020

Acrylic on canvas

30 x 20 cm / 11.8 x 7.8 in

Edition: single

USD 500



arte+care



Rafael Baron

Charles, 2020

Acrylic on canvas

30 x 20 cm / 11.8 x 7.8 in

Edition: single

USD 500

sold



arte+care



Rafael Baron

Clara, 2020

Acrylic on canvas

30 x 20 cm / 11.8 x 7.8 in

Edition: single

USD 500

sold



arte+care



Rafael Baron

Claudete, 2020

Acrylic on canvas

30 x 20 cm / 11.8 x 7.8 in

Edition: single

USD 500



arte+care



Rafael Baron

Fabiane, 2020

Acrylic on canvas

30 x 20 cm / 11.8 x 7.8 in

Edition: single

USD 500



arte+care



Rafael Baron

Joana, 2020

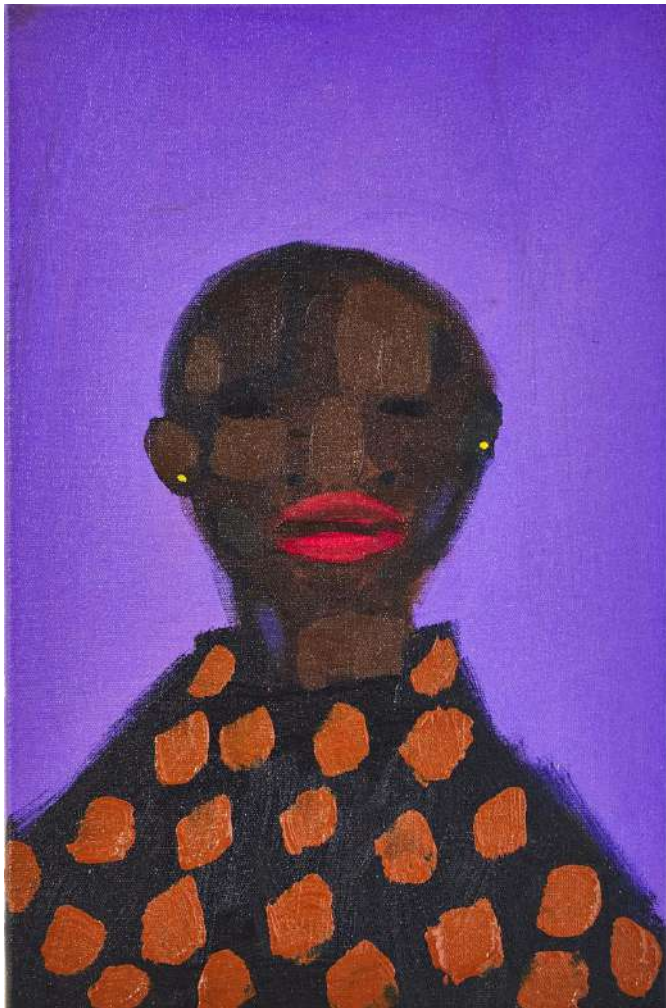
Acrylic on canvas

30 x 20 cm / 11.8 x 7.8 in

Edition: single

USD 500

sold



arte+care



Rafael Baron

Josemar, 2020

Acrylic on canvas

30 x 20 cm / 11.8 x 7.8 in

Edition: single

USD 500



arte+care



Rafael Baron

Juliane, 2020

Acrylic on canvas

30 x 20 cm / 11.8 x 7.8 in

Edition: single

USD 500



arte+care



Rafael Baron

Julio, 2020

Acrylic on canvas

30 x 20 cm / 11.8 x 7.8 in

Edition: single

USD 500



arte+care



Rafael Baron

Lourdes, 2020

Acrylic on canvas

30 x 20 cm / 11.8 x 7.8 in

Edition: single

USD 500



arte+care



Rafael Baron

Lucas, 2020

Acrylic on canvas

30 x 20 cm / 11.8 x 7.8 in

Edition: single

USD 500

sold



arte+care



Rafael Baron

Marlon, 2020

Acrylic on canvas

30 x 20 cm / 11.8 x 7.8 in

Edition: single

USD 500



arte+care



Rafael Baron

Martin, 2020

Acrylic on canvas

30 x 20 cm / 11.8 x 7.8 in

Edition: single

USD 500



arte+care



Rafael Baron

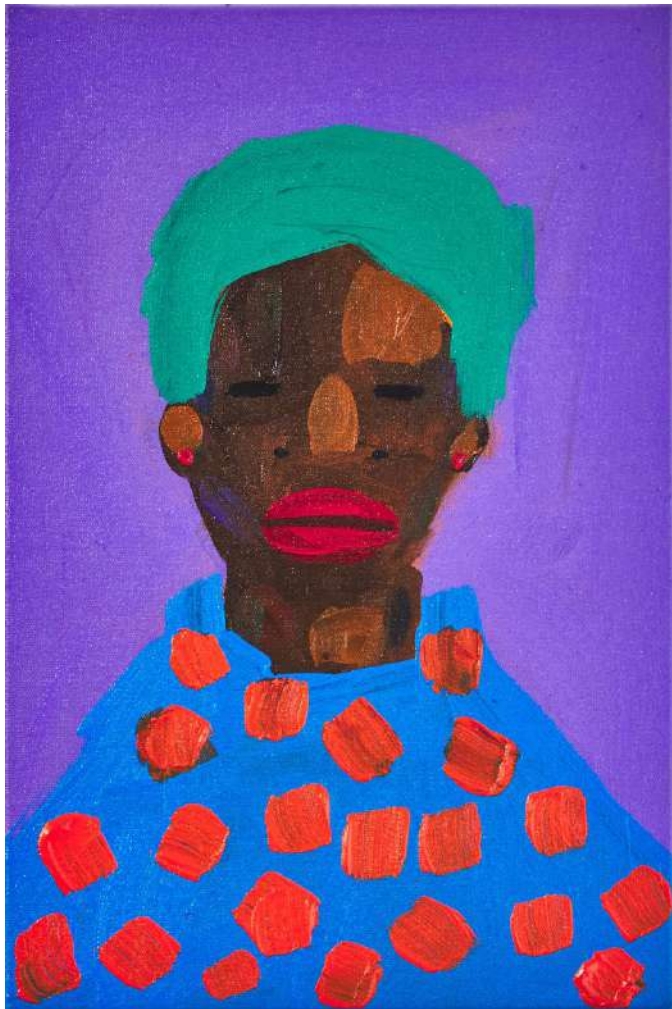
Nara, 2020

Acrylic on canvas

30 x 20 cm / 11.8 x 7.8 in

Edition: single

USD 500



arte+care



Rafael Baron

Nicole, 2020

Acrylic on canvas

30 x 20 cm / 11.8 x 7.8 in

Edition: single

USD 500

sold



arte+care



Rafael Baron

Paula, 2020

Acrylic on canvas

30 x 20 cm / 11.8 x 7.8 in

Edition: single

USD 500



RAFAEL BARON was born in 1986 in Nova Iguaçu, RJ, Brazil, where he lives and works. He is graduated in Theology from FAECAD and in Photography and Studio Photography from SENAC - RJ. Studied Drawing (with Sérgio Dias), Painting (with Celso Mathias) and Art History (with Thiago Martins). He also attended several courses at Parque Lage School of Visual Arts - EAV, in Rio de Janeiro.

In his artistic practice, Baron develops studies and researches on figurative painting, with an eye to contemporary poetics. His work starts from the examination of the human figure, through which he discloses the subjectivities of the personality of each individual, looking for unique attributes in the process of creating his characters. In his research, he addresses issues related to social prejudice, racism, LGBT phobia, misogyny, among others. He sees art as a powerful communication tool that can contribute to a harmonious social experience. By proposing an open dialogue on tolerance and diversity, the artist invites the viewer to become a co-author of his creations.

In his recent trajectory, the artist participated in the group exhibition *Eixo Arte Contemporânea*, promoted by the website EixoArte - www.eixoarte.com (2020). He also had his first solo exhibition presented at Spetaculu - School of Art and Technology, in Rio de Janeiro (2019/2020). His paintings are part of Brazilian singer Ivete Sangalo's latest DVD - *Live Experience* - directed by Gringo Cardia.

He was awarded in the “*Garimpo*” contest (2019/2020), promoted by *Dasartes* magazine, an accolade aimed at Brazilian emerging artists who have never had an individual exhibition at an art institution. His works are already part of private collections in Brazil and abroad.



Jaime Portas Vilaseca

Director

+ 55 21 99926 3899

jaime@portasvilaseca.com.br

Manuela Parrino

Marketing and Liaisons

+55 21 98819 8906

manuela@portasvilaseca.com.br

Frederico Pellachin

Institutional Communications and Production

+55 21 98336 1984

fredericopellachin@portasvilaseca.com.br

+55 21 2264 5965

www.portasvilaseca.com.br

galeria@portasvilaseca.com.br

Rua Dona Mariana, 137 casa 2

Botafoogo 22280-020

Rio de Janeiro RJ Brazil

www.artsy.net/portas-vilaseca-galeria

www.facebook.com/portasvilaseca

Instagram: @portasvilaseca

Twitter: @portasvilaseca

